

OnScreen™

formerly My-T-Soft®AT

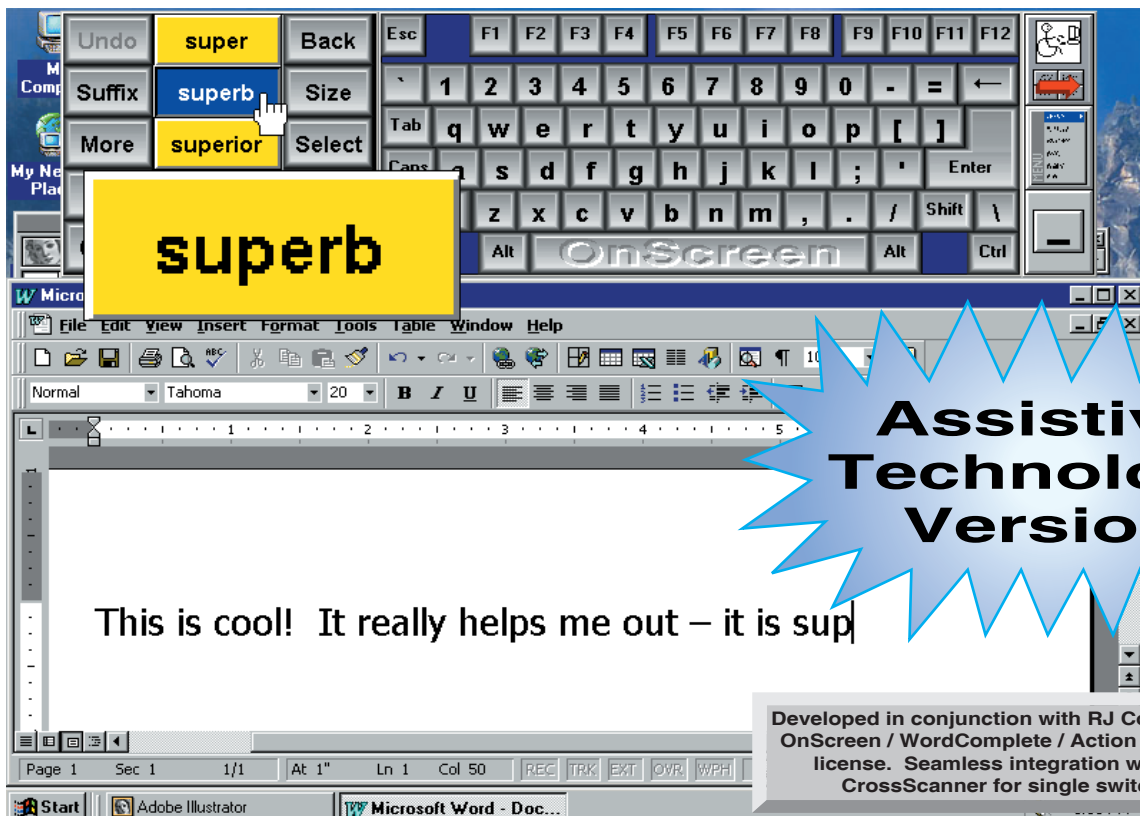
More International Layouts

Text-To-Speech Enabled

Network Logon Module

Infinite sizing & 3D Keys

Visual Enhancement Options



Assistive Technology Version

Developed in conjunction with RJ Cooper & Associates. OnScreen / WordComplete / Action Panels used under license. Seamless integration with RJ Cooper's CrossScanner for single switch operation.

WordComplete - Adaptive Word Prediction and Completion

The WordComplete / Action Panel actively selects words as the user is typing. The words are sorted by frequency of use, pulled from an editable list based on the letters already typed. Selection results in the automatic completion of the word. New words are automatically added. Suffix selection is available, and an Undo option reverses the last command.

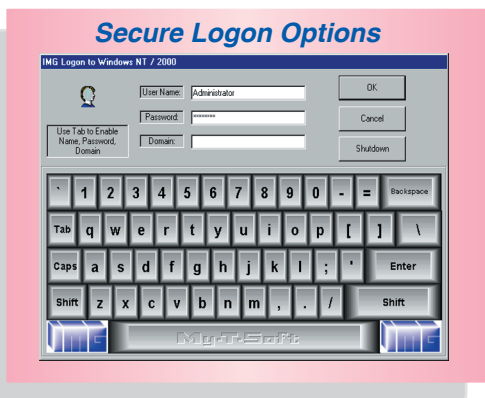
The World's Premier On-Screen Keyboard!



The Keyboard panel has over 200 layouts available, including International, an alphabetic ABC layout for new computer users & children, and 3 DVORAK layouts for the physically challenged. OnScreen also provides ADA compliance for corporations, institutions, & government agencies. Ideal for Non-Typists! Heads-up display keeps your eyes on the screen at all times. The Edit Panel and the Numeric Keypad Panel are available as individual

Assistive Technology

OnScreen includes features such as Show & Hide Keys, Verbal & Audio Key feedback, Text-To-Speech capability, a Key Press Dwell Timer, Basic & Advanced Modes, automatic positioning & Window selection, colorable keys & panels, selectable panel display in infinite Sizes, automatic Suffixes after word completion, optional U after Q, spacing after punctuation, etc. OnScreen gives you the tools you need to complete common tasks easily!



MICROSOFT
WINDOWS
COMPATIBLE

- "It seems to be a dream come true!", *Challenged User*
- "Excellent Software," "Easy to use," "I Love It!," "Thanks!," "Now I can Finally use a PC!," "Great!" *OnScreen Users*
- "I can see it would become indispensable for many kinds of Windows work." *Brian Livingston, InfoWorld*

User Interface Enhancement



Innovation Management Group, Inc.
179 Niblick Rd #454
Paso Robles, CA 93446
Web Site: www.imgpresents.com

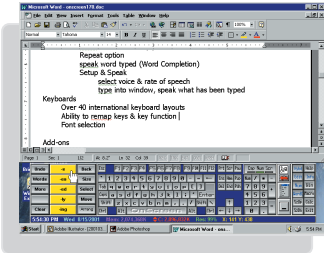
Order: 1-800-889-0987
Office: 1-818-701-1579
Fax: 1-818-936-0200
E-mail: info@imgpresents.com

OnScreen™

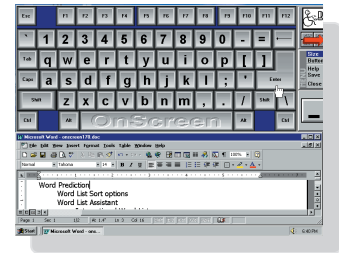
formerly My-T-Soft® AT

On-screen Keyboards!

* Virtual Keyboard interface provides a heads-up display that creates an entirely new way to operate Windows

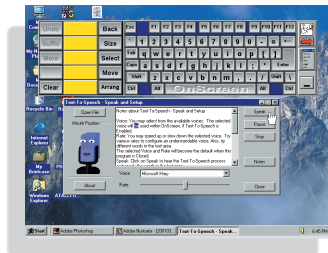


- * Acts Exactly like a physical keyboard!
- * International, Alphabetic, Standard & Dvorak layouts available
- * Floats above all other windows for intuitive operation
- * Enhances other text input methods
- * Lockable keys with audio & visual feedback
- * WordComplete provides Adaptive Word Prediction & Word Completion - New words are added automatically & frequency sorted

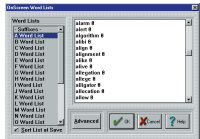


Features & Functions...

- Customizable audio feedback provides description of keys & functions
- Text-To-Speech Enabled - includes Repeat Option
- Text-To-Speech Speak and Setup Utility included

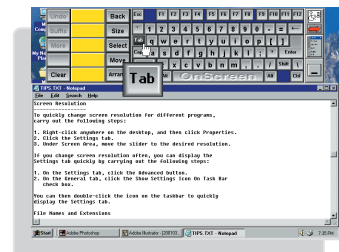


- * Assistive Technology version developed with expert guidance & user input
- * Two Operation Modes - Basic & Advanced
- * Automatic Screen Positioning & arrangement of other windows creates optimum operating environment when used as the primary text input device
- * Assistive Features include selection of common suffixes, automatic U after Q, spacing after punctuation, automatic Capitals for new sentences, and an Undo feature that reverses the last WordComplete action
- * Add-Ons include TurnAway for Head Mouse users, Network Logon, Word List Assistant, and International Word Lists



- ◀ Word Lists are User editable
- ◀ Manage, Save, & Install Word Lists

- Read in files, add to active Word List



- ◀ Visual Enhancements include Key Highlight and Key Zoom
- ◀ Automatic Scroll options allow larger sizes
- ◀ Infinite sizes, 3D keys, + transparency in 2k/XP/Vista

- Over 200 Keyboard Layouts Available!



- Keystroke Macro features allow user to build keystroke sequences and assign them to Macro buttons, grouped on separate Macro Panels

Powerful Software!

Works with any Mouse, Trackball, Pen, Touchscreen, or Windows pointing device
Also works with the Head Mouse, Foot Mouse, Eye Mouse, Quadjoy, CrossScanner, Joystick-To-Mouse, and many other Adaptive / Assistive Technology pointing devices

Software Requirements

Microsoft Windows 7 / Vista / XP / 2000.
Windows compatible pointing device.
Contact IMG for Licensing Options.



Unlimited Macro Panels can be created for any task, providing flexibility and ease of use. A single Click can replace hundreds of Keystrokes, allowing Users to replace repetitive tasks, and complete complex functions with a single action.

For Thin-Client / Citrix / Terminal Server applications, use My-T-Soft TS.

OEM versions, Individual Components, Network and Site Licenses are available.

Innovation Management Group's Products Are Available From:



Innovation Management Group, Inc.
Order: 1-800-889-0987
Office: 1-818-701-1579 Fax: 1-818-936-0200
Web Site: www.imgpresents.com