

# **My-T-Soft® Basic**

**for Windows**

**Keyboards, Panels and Boards**

**Version 2.30 Release 12**

**User's Guide**

# **My-T-Soft® Basic: for Windows; Keyboards, Panels and Boards; Version 2.30 Release 12; User's Guide**

## **IMG Real World Press**

179 Niblick Road #454  
Paso Robles, CA 93446  
1-800-889-0987 (US & Canada)  
+1-818-701-1579

Website: <http://www.imgpresents.com>

To report errors, please send a note to [ts@imgpresents.com](mailto:ts@imgpresents.com)

IMG Real World Press is a division of Innovation Management Group, Inc.

My-T-Soft Basic, Version 2.30 Release 12, 7/1/2022

Copyright © 1999-2022 by Innovation Management Group, Inc.

Production/Editing/Composition/Indexing/Publishing: IMG Real World Press

## **Notice of Rights**

All Rights Reserved. No part of this book may be reproduced or transmitted in any form by any means, electronic, mechanical, photocopying, recording, or otherwise, without the prior written permission of the publisher. For information on obtaining permission for reprints, excerpts, or other uses, please contact [ts@imgpresents.com](mailto:ts@imgpresents.com)

## **Trademarks**

My-T-Mouse®, My-T-Pen®, My-T-Touch® and My-T-Soft® are registered trademarks of Innovation Management Group, Inc.

Any other product name, service, or company identified within the book is used for informational or editorial purposes only, and with no intention of infringement of any trademark. No such use is intended to convey endorsement or other affiliation with this book.

## **Notice of liability**

The information in this book is distributed on an "As is" basis, without warranty. While every precaution has been taken in the preparation of this book, IMG Real World Press shall not have any liability to any person or entity with respect to any loss or damage caused or alleged to be caused directly or indirectly by any information contained in this book or the product(s) described. The publisher takes no responsibility for any errors or omissions.

ISBN 978-0-557-96957-9

# Table of Contents

<b>Part I. Getting Started</b> .....	<b>iv</b>
1. Quick Start .....	1
2. Getting Started .....	3
My-T-Soft Basic User's Guide .....	3
Using this Guide .....	3
What is My-T-Soft Basic? .....	4
Why do I need My-T-Soft Basic? .....	5
Features.....	5
What You Need.....	5
Installing / Un-Installing My-T-Soft Basic .....	6
Starting My-T-Soft Basic.....	7
Licensing Information .....	7
License Manager .....	8
Commonly Asked Questions .....	14
Customer Support.....	14
Product Catalog .....	15
<b>Part II. Using My-T-Soft Basic</b> .....	<b>18</b>
3. My-T-Soft Basic Operation.....	19
General Operation .....	19
Free Edition (FREEBOARD.KBF) .....	19
Using My-T-Soft Basic Menu .....	20
Select Board.....	21
4. Advanced User Notes.....	23
Advanced User Notes & Information.....	23
My-T-Soft Basic Files & File Notes & Installation Information.....	23
Registry Entries and Notes .....	25
Updates .....	26
Get My Boards .....	27
My-T-Soft Basic Initialization File Documentation (MYTSOFT.INI) .....	27
Keyboard Operation .....	32
Application Notes .....	33
Final Release Notes .....	34
Customer Suggestions .....	35
<b>Index</b> .....	<b>36</b>

# Part I. Getting Started

**General information about this guide, the product, installation, and getting started (how to get My-T-Soft Basic running).**

**Chapter 1 - Quick Start** contains details on the fastest way to install & begin using My-T-Soft Basic

**Chapter 2 - Getting Started** has more information about this guide, My-T-Soft Basic features, Installing / Un-Installing, Licensing Information, Standard Settings, using My-T-Soft Basic Setup, Commonly Asked Questions, and information about Customer Support.

# Chapter 1. Quick Start

## Install My-T-Soft Basic

There are various ways to obtain IMG software, including (but not limited to):

- Web based / Internet download from IMG's web site (<http://www.imgpresents.com/demo.htm>)
- Shipped CD / DVD physical media - IMG Product Disc
- Download ISO image file and burn IMG Product Disc CD / DVD
- USB Flash Drive (pre-installed or installed from USB media web download)
- Single file install (from local network / internet / other media)
- IMG on-line account

**Note:** IMG Software is built by product and major version with minor releases. There is only 1 unique build, but can be packaged / delivered / obtained in various ways. When unlicensed, the software acts as a demonstration / evaluation copy, and operation will be limited in length or run-time or capabilities. Once licensed (typically via License Key and Serial Number, Internet / Account licensing, or OEM / Company-wide / Enterprise licensing), the software will operate with no limitations.

**Recommendation:** The quickest and easiest method for obtaining IMG software is to download the current version from IMG's web site (<http://www.imgpresents.com/demo.htm>). Download, then run the file to install. Test, review, play with, and verify the software meets your needs and requirements. When ready to purchase, go to the IMG License Manager, and click on the "Purchase License Now" button. If working on a machine without internet access, use the Standard single file download, or use a Product Disc option. Separately, purchase the license for the product directly on the website - once you have your License Key and Serial Number, you can install and license the software.

The following outlines a standard retail Product Disc based install. For other options, refer to notes and details available at the source. In general, the approach is to install the software, then license the software. The Product Disc Installation Assistant provides an easy way to accomplish these two tasks.

- In Windows, insert the CD or DVD - the AutoRun feature will load the Installation Assistant - you may Install a licensed product , Install other product demos, or view Release Information. **If you have a Certificate of Authenticity, enter your License Key, Serial Number, and Name to Install and automatically License.**
- If AutoRun is not enabled:
- In Windows, Click on the Start Button
- Select Run
- Select D:SETUP, or type D:SETUP (or E:SETUP if CD/DVD drive E:, etc.)
- Press (ENTER) or click on OK

- In Windows Vista, you may not have the Run Option - select Computer, your CD/DVD drive, and open Setup
- Answer the questions and follow the instructions on your screen

**Note:** You may also Un-Install My-T-Soft Basic by running SETUP.EXE After My-T-Soft Basic has been properly installed. (My-T-Soft Basic Setup will ask you if you wish to Un-Install.) This has been provided as a convenience to the user. It is recommended that you use the Control Panel | Add/Remove Programs Icon to remove My-T-Soft Basic.

### **Start My-T-Soft Basic**

Click on the Start Button, and open the Start Menu.

Select (All) Programs, then Select My-T-Soft Basic. My-T-Soft Basic menu will have selections corresponding to the icons in the group. Select My-T-Soft Basic to begin operation.

My-T-Soft Basic will automatically run after install. You may click on the small icon in the tray (near the clock) for My-T-Soft Basic menu. Refer to the on-line help, and the User's guide for features and capabilities of My-T-Soft Basic.

# Chapter 2. Getting Started

## My-T-Soft Basic User's Guide

Version 2.30 Release 12

7/1/2022

A Utility for Windows

Information in this document is subject to change without notice and does not represent a commitment on the part of Innovation Management Group, Inc. The software described in this document is furnished under a license agreement or nondisclosure agreement. The software and documentation may be used or copied only in accordance with the terms of this agreement. It is against the law to copy the software on any medium except as specifically allowed in the license or nondisclosure agreement. The purchaser may be allowed to make a back-up copy. No part of this manual or guide may be reproduced or transmitted in any form or by any means, electronic or mechanical, including photocopying, recording, or information storage and retrieval systems, for any purpose other than the purchaser's personal use, without the express written permission of Innovation Management Group, Inc.

This manual and product represent over 23 years of on-going development, testing, and support. Licensed users of the software are the most important aspect of the entire process that brings this manual and product into existence. Please be respectful of all parties involved.

### **Trademarks:**

Microsoft Windows is a trademark of Microsoft Corporation.

My-T-Mouse<sup>®</sup>, My-T-Pen<sup>®</sup>, My-T-Touch<sup>®</sup> and My-T-Soft<sup>®</sup> are registered trademarks of Innovation Management Group, Inc.

### **Copyrights**

My-T-Soft Basic Copyright © 1999-2022 Innovation Management Group, Inc.

My-T-Soft Basic User's Guide Copyright © 1999-2022 Innovation Management Group, Inc.

All Rights Reserved. Software Subject to Restricted Rights.

## Using this Guide

This guide is a comprehensive collection of details, notes, and information about My-T-Soft Basic. Portions are incorporated within the product itself, and it is also available in various forms (e.g. printed, on-line, PDF, etc.).

### **Important User Information**

This guide is for users who are familiar with Windows, its basic concepts, and how to operate within Windows. If you are not, the information you may need to fully utilize My-T-Soft Basic and this guide may be limited. You may wish to review Windows help, tutorials, and other available information on using and operating Windows before continuing using this guide.

### **Conventions used within this guide**

**Note:** Notes and other additional information will be indicated in this way

### Warning

Special and other important details to pay close attention to will appear this way

## What is My-T-Soft Basic?

My-T-Soft Basic is the Windows run-time component of IMG's Build-A-Board, which allows custom on-screen keyboards, panels and boards. My-T-Soft Basic provides the program to display and operate these keyboards. When unlicensed, the Free Edition provides various useful keyboards, panels, and boards. When licensed, My-T-Soft Basic includes full keyboards in multiple languages and access to thousands of layouts from the Board database at Build-A-Board.com (<http://www.build-a-board.com/board-browser/>). My-T-Soft® is My Typing Software!

**Keyboard**

**Full Keyboard**

**Edit Pad**

**Num Pad**

**Tel Pad**

**Windows Panel**

**Operator Interface Panel**

**Split Keyboard**

**Function Key Panel**

**Password**

**Build-A-Board**  
Create and Customize Layouts!

**My-T-Soft®**  
**Build-A-Board**  
Create and Customize Layouts!

**These boards built with IMG's Build-A-Board**  
**For thousands more, see Build-A-Board.com!**





## Why do I need My-T-Soft Basic?

My-T-Soft Basic provides an open-ended set of user-interface tools for all Windows users, and ideal for touchscreen systems and tablets, guaranteed to make your life easier. Productivity gains, easier access to system functions, and tools for a more intuitive user interface can be extended into all kinds of usage scenarios. Explore the Power and Possibilities with the Free Edition, or purchase the IMG Personal License to access Boards that can make any task easier. Please contact Innovation Management Group, Inc. for OEM, site, company, or enterprise license options.

## Features

- Customizable on-screen keyboards - provided layouts should be viewed as ideas and concepts ready to be optimized for your wants and needs
- Extensive virtual keyboard functionality and interface options - over 20 years of field tested technology
- Access to the largest database of on-screen keyboard layouts, boards, and panels in the world
- Online Accounts allow selections of your boards for easy access on any system you may be using
- Extensible from a single custom keyboard to a complete user interface system
- Complete customization and operation options included or available
- Advanced options including parallax settings, key block timeout, user-modifiable macros, external utilities
- Windows System functions - shutdown, log off, restart
- License options include the Free Edition, the IMG Personal License for individuals, to site, company, or global enterprise licensing.

## What You Need

To run My-T-Soft Basic you need the following equipment (hardware requirements):

- IBM 80386 or higher or compatible
- 50 mb hard disk space available
- 128 mb memory or higher
- Windows 11 / 10 / 8.1 / 8 / Vista / XP / 2000
- VGA or SVGA recommended
- Any Windows supported pointing device

## Installing / Un-Installing My-T-Soft Basic

There are various ways to obtain IMG software, including (but not limited to):

- Web based / Internet download from IMG's web site (<http://www.imgpresents.com/demo.htm>)
- Shipped CD / DVD physical media - IMG Product Disc
- Download ISO image file and burn IMG Product Disc CD / DVD
- USB Flash Drive (pre-installed or installed from USB media web download)
- Single file install (from local network / internet / other media)
- IMG on-line account

**Note:** IMG Software is built by product and major version with minor releases. There is only 1 unique build, but can be packaged / delivered / obtained in various ways. When unlicensed, the software acts as a demonstration / evaluation copy, and operation will be limited in length or run-time or capabilities. Once licensed (typically via License Key and Serial Number, Internet / Account licensing, or OEM / Company-wide / Enterprise licensing), the software will operate with no limitations.

**Recommendation:** The quickest and easiest method for obtaining IMG software is to download the current version from IMG's web site (<http://www.imgpresents.com/demo.htm>). Download, then run the file to install. Test, review, play with, and verify the software meets your needs and requirements. When ready to purchase, go to the IMG License Manager, and click on the "Purchase License Now" button. If working on a machine without internet access, use the Standard single file download, or use a Product Disc option. Separately, purchase the license for the product directly on the website - once you have your License Key and Serial Number, you can install and license the software.

The following outlines a standard retail Product Disc based install. For other options, refer to notes and details available at the source. In general, the approach is to install the software, then license the software. The Product Disc Installation Assistant provides an easy way to accomplish these two tasks.

- In Windows, insert the CD or DVD - the AutoRun feature will load the Installation Assistant - you may install a licensed product, install other product demos, or view Release Information. **If you have a Certificate of Authenticity, enter your License Key, Serial Number, and Name to install and automatically license.**
- If AutoRun is not enabled:
- In Windows, click on the Start Button
- Select Run
- Select D:SETUP, or type D:SETUP (or E:SETUP if CD / DVD drive E:, etc.)
- Press [Enter] or click on OK
- In Windows Vista, you may not have the Run Option - select Computer, your CD/DVD drive, and open Setup
- Answer the questions and follow the instructions on your screen

**Note:** You may also un-install My-T-Soft Basic by running SETUP.EXE after My-T-Soft Basic has been properly installed. (My-T-Soft Basic Setup will ask you if you wish to un-install.) This has been provided as a convenience to the user. It is recommended that you use the Control Panel | Add/Remove Programs icon to remove My-T-Soft Basic.

## Starting My-T-Soft Basic

Click on the Start Button, and open the Start Menu. Select (All) Programs, then select My-T-Soft Basic. My-T-Soft Basic menu will have selections corresponding to the icons in the group. Select My-T-Soft Basic to begin operation.

The following icons will also be available in My-T-Soft Basic group:

**My-T-Soft Keyboard** - runs My-T-Soft Basic

**My-T-Soft Basic Help** - opens My-T-Soft Basic Help (opens this document)

**Licensing Information** - Displays current license status of My-T-Soft Basic, allows instant licensing

**Check for Updates** - runs the IMG Download Manager and checks for updates for installed product

Refer to My-T-Soft Basic Operation Notes for a quick overview of My-T-Soft Basic.

## Licensing Information

My-T-Soft Basic uses the IMG License Manager to manage the licensed use of this product. If unlicensed, the product will run as the Free Edition and allow access to all keyboard, boards, and panels, but unlicensed boards will be time-limited, and revert back to the Free Board. For extended evaluation and testing purposes, please contact IMG Customer Service for an evaluation license. Once licensed, the operation will not be limited in any way, and includes a Build-A-Board.com (<http://www.build-a-board.com>) account for managing your layouts.

My-T-Soft Basic may be run unlicensed as the Free Edition, or licensed with the IMG Personal License (internet access to Build-A-Board.com account required). For further details, refer to the IMG License Manager. There is also USB storage device licensing, so My-T-Soft Basic can be run from the USB device, simply by inserting the licensed device into any system.

**Note:** There are numerous license schemes (including OEM, site, & enterprise licenses) available to meet the needs of all our customers. If you have any licensing questions, please contact Innovation Management Group, Inc. directly.

## License Manager

The IMG License Manager will operate with an IMG Personal License (Basic/Standard/Professional). This is a system based license that can license any supported IMG product per platform. Licensing is done through the internet and your Build-A-Board.com account, accessed via the "Retrieve System License" button.

### IMG License Manager - Authentication

IMG License Manager - Authentication

License Information - Version 2.30.22077 [MTS230]  
 This product is locked in Demo mode. To unlock, register, and license this product, a registered Serial #, License Key and Customer Name must be entered. Please enter the details from your Certificate of Authenticity. If no Certificate, please click on the Retrieve System License button to obtain a License (Internet required).

[Retrieve System License](#)

Information to provide with Payment  
 System ID: 2022-1ABD-ECF4-A179  
[Copy System ID to Clipboard](#)

The System ID is required for proper licensing. It is important the System ID be obtained from the already installed software. To use this System ID, click Purchase / Apply License Now (above).

Enter Unlock Codes  
 (Sent after payment approved)

License Key:   
 Serial No.:   
 Customer:   
 Company:

[Additional License Options / Support](#)

Contacting Innovation Management Group, Inc. & License Information  
 World Wide Web: <http://www.imgpresents.com/order.htm>  
 E-mail: [order@imgpresents.com](mailto:order@imgpresents.com)  
 USA & Canada (Toll Free): 1-800-889-0987

[Finish](#) [Register Later](#)

When the "Retrieve System License" button is used (if applicable to the product), you will have the option of using an existing Build-A-Board.com account or selecting the type of License you wish to purchase.

#### The IMG Personal License

Purchase of a new IMG Personal License creates a Build-A-Board.com account, and the system will be licensed automatically via the "Retrieve System License". If you already have a Build-A-Board.com account, you can Apply a license to your system when you use the "Retrieve System License" button.

## IMG License Manager - Account Credentials

After selecting the "Retrieve System License" button, you will be shown the Account Credentials dialog to enter e-mail and password, as well as several other options. If you do not have an existing Build-A-Board.com account, simply click OK to go to Build-A-Board.com for options on purchasing a license or creating an account.

If already have a Build-A-Board.com account, simply enter your existing account credentials with e-mail and password. By default, the password is obscured - to see in plain text, check on the View Password option. The password is not saved locally, and would need to be re-entered if system is unable to retrieve a valid license. If you check on the Save Password Locally, the entered password will be saved, and used to populate the field. Note the password is saved in an encrypted form (not plain text). If there is a saved password, and you wish to bypass this Account Credentials dialog, the Automatic OK if Password when checked on will skip the display of the dialog, and automatically retrieve a license based on the e-mail/password credentials provided. For automation options, see below.

### Automation Options - ACCOUNT.TXT and AUTOLICENSE

#### ACCOUNT.TXT

ACCOUNT.TXT is a simple text file that can contain account credentials and options that LICENSE.EXE (IMG License Manager) will read in and update the System Registry. Note for security purposes, if this file exists in the same folder as LICENSE.EXE, the file is read, parsed, updates the registry, and then is deleted. The ACCOUNT.TXT file may be saved with ANSI or UNICODE encoding. This creates a mechanism to bypass the user interface required with the Account Credentials dialog, and can be used to enable one-click licensing, or to facilitate automatic licensing.

Below are the available entries for ACCOUNT.TXT and structure to enable correct reading and parsing of the file. Note that the password is plain text here, but saved in the registry in a non-plain text format. Also note that ACCOUNT.TXT is deleted once parsed, so the account credentials will be secure once LICENSE.EXE is run. In general, LICENSE.EXE should be run soon after whatever step drops ACCOUNT.TXT into the installation folder. Also, because Administrator privileges are required to copy ACCOUNT.TXT into a Program Files location, and LICENSE.EXE requires the same privileges,

treating these as a dual-step process is recommended (i.e. copy in ACCOUNT.TXT, then run LICENSE.EXE). If no user interaction desired when running LICENSE.EXE, the POSTINSTALL command line parameter will run the IMG License Manager without any user interaction needed - no dialogs, no screen display (e.g. LICENSE.EXE POSTINSTALL[Enter]). For practical purposes, this converts ACCOUNT.TXT entries into System Registry and removes ACCOUNT.TXT. See AUTOLICENSE below for no user interaction with License retrieval from Build-A-Board.com account.

```
[License Manager]
BABEmail=your.name@example.com
BABPassword=password
BABSystemName=MySystem
BABSavePassword=Yes
BABViewPassword=No
BABAutoOK=Yes
```

The following is the structure of data saved into the Registry Key as outlined below (example data):

```
[HKEY_LOCAL_MACHINE\SOFTWARE\Innovation Management Group\License Manager]
"BABEmail"="your.name@example.com"
"BABPassword"="J,246,V,195,F,233,E,232,I,239,J,224,N,230,F,201,"
"BABSystemName"="MySystem"
"BABSavePassword"="Yes"
"BABAutoOK"="Yes"
"BABViewPassword"="No"
```

Note the SavePassword, AutoOK, and ViewPassword can hold values of "Yes" or "No".

### **AUTOLICENSE**

If LICENSE.EXE is ran with AUTOLICENSE added at the command line as a parameter (e.g. LICENSE.EXE AUTOLICENSE[Enter]), the LICENSE.EXE will perform certain tasks, and if the credentials are correct, the options are correct, the Build-A-Board.com Account Exists and is able to issue licenses for the account, the system will automatically license.

### **Steps Required to Automatically License My-T-Soft Basic using AUTOLICENSE**

1. Build-A-Board.com Account Exists - you can verify this by going to Build-A-Board.com/accounts/ and logging in with e-mail and password (account credentials).
2. Licenses available - once logged in to Build-A-Board.com account, click on License Manager tab to view licenses used and licenses available. Purchase Licenses if needed. Also note that Account Type can limit license issuance - Basic will only issue licenses for IMG Personal Products - Standard or Professional required for My-T-Soft Basic
3. ACCOUNT.TXT - create text file ACCOUNT.TXT with correct credentials and options. As Administrator, drop ACCOUNT.TXT file into \Program Files\MTSBASIC.
4. LICENSE.EXE AUTOLICENSE - As Administrator, run LICENSE.EXE with AUTOLICENSE command line parameter. Note this can be automated via batch file or shell script.

## IMG License Manager - Additional License Options

Additional License Options / Support Options / License Retrieval

**License View**  
Use Retrieve System License on main License Page to obtain your license. Review License Details with button below. For an Evaluation license, use your Build-A-Board.com Account. You may also troubleshoot license issues on this Support Page.

License Details    Go To Build-A-Board.com    Save License Info

**Support Options**  
View Current License File (LICENSE.LIC)    Delete (Reset) License File (LICENSE.LIC)

**License Retrieval (previously purchased license - Order Confirmation required)**  
Order #:    E-Mail address:    Retrieve License

IMG Personal License Mode    Done    License Manager Help

The IMG Personal License is a system based license, and can be retrieved at the main license page with the "Retrieve System License" button. Most license issues can be dealt with online at your Build-A-Board.com account. There are some advanced and support options that can be managed at the Additional License Options page.

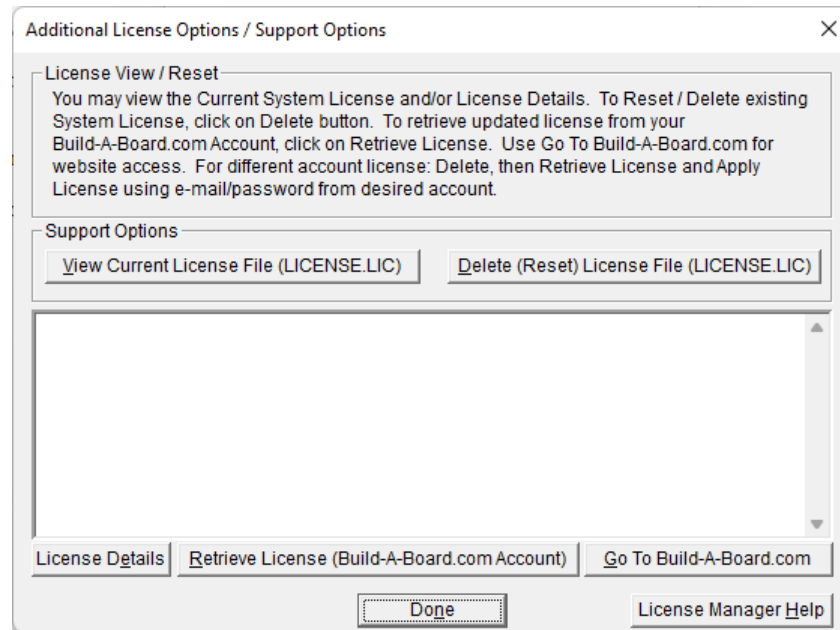
The "License Details" button will check the System License and report the issue or issues why the license is not valid. In some cases, these details may explain the situation, and point to a corrective action.

The "Go To Build-A-Board.com" button will open a browser and go directly to the login page for your Build-A-Board.com Account.

Use "View Current License File (LICENSE.LIC)" to read the System License, and display the License details. In some cases, these details may explain the situation, and point to a corrective action.

Use "Delete (Reset) License File (LICENSE.LIC)" to remove the System License and Reset the System ID. This action is not recommended and requires 2 confirmations, because all previous license information is destroyed, and a new System License will be required.

### Additional License Options - Licensed View



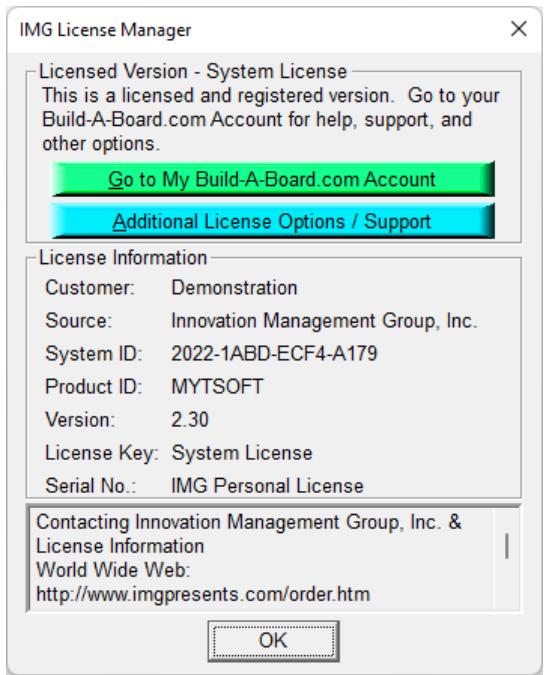
The Additional License Options changes slightly when the software is properly licensed. The buttons already described above move positions, and there is an additional button option (Retrieve License).

Use "Retrieve License (Build-A-Board.com Account)" to reload and obtain the current license from your Build-A-Board.com account. This could be necessary if you've added a platform license, purchased a license while operating on an evaluation license, added a serial number and been advised to renew your license, or other license change that requires a refresh/renew from the current license available tied to the current Build-A-Board.com account. Note that if you need a license from a different Build-A-Board.com account, you must Delete / Reset the license, and Apply the license to the current system with your e-mail/password from the correct Build-A-Board.com account.

## IMG License Manager - Licensed Display

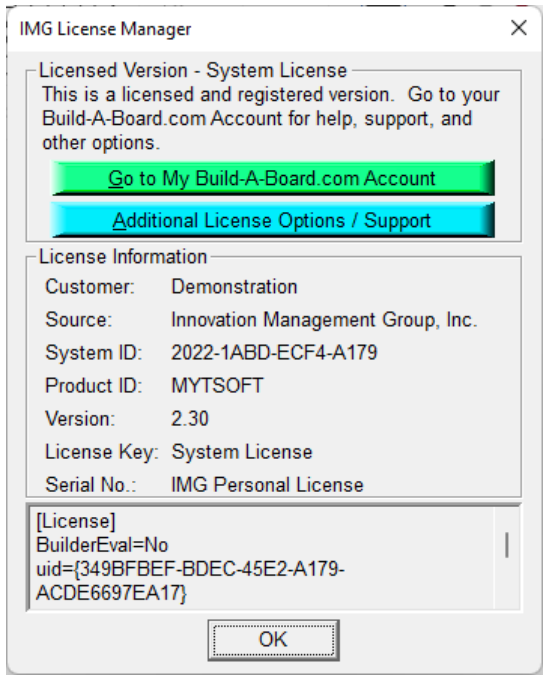
### The IMG Personal License



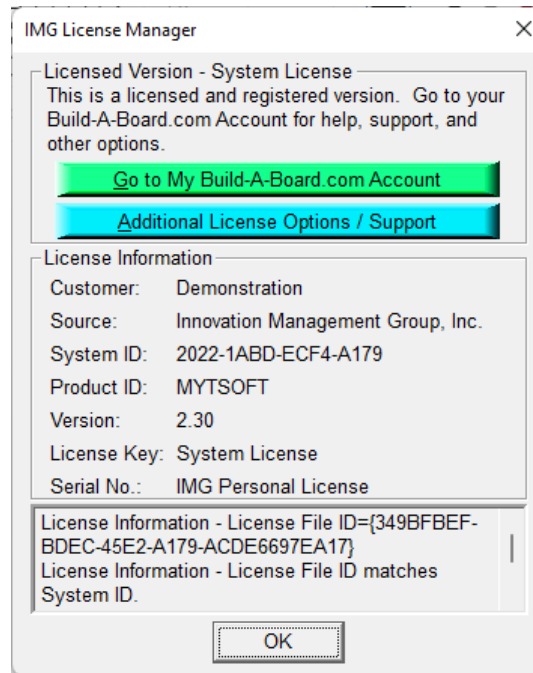


When properly Licensed with an IMG Personal License, a screen similar to this will show the License Information for the product. This display indicates that the software is Licensed. For help, support, and other options, you can click on the "Go to My Build-A-Board.com Account" to open a browser and access your account online.

If you single left click on the text display box at the bottom, it will rotate through 3 different views - License Information, IMG Personal License details for the system, and results from IMG Personal License evaluation.



The second view shows License Details from the System License.



The third view shows details on how the System License was evaluated by the License Manager.

**Technical Note:** Professional / Support Licenses are licensed per product and the LICENSE.LIC file is located in the installation folder. The IMG Personal License is a System License, and the LICENSE.LIC is located in the Common Files area of Program Files in the Innovation Management Group License Manager folder.

## Commonly Asked Questions

### Compatibility

#### 1. Does My-T-Soft Basic work with all Windows Applications?

Yes.

### My-T-Soft Basic Operation

#### 2. Why does a board I'm using close?

During unlicensed operation, an unlicensed board will time-out after a few minutes. Purchase a license to allow continued operation.

#### 3. How can I change a board layout?

Use IMG's Build-A-Board to modify or customize any layout. Refer to the Build-A-Board Board Browser (<http://www.build-a-board.com/board-browser/>) to see other available layouts.

## Customer Support

My-T-Soft Basic Software is backed by a support staff trained to provide you with fast, courteous service. Over the years, IMG has astounded individuals at the quality of its software and its support. So that we can continue to focus our resources on development and providing high-quality products & support, we do appreciate your assistance in reviewing the help, manual, and support information available at our website to see if the problem or question has already been addressed. However, if you need assistance beyond what the manual, tutorial, help files, and on-line support database provide, please contact IMG Customer Service:

Innovation Management Group, Inc.  
Customer Service  
179 Niblick Road #454  
Paso Robles, CA 93446  
USA  
1-800-889-0987 (US & Canada)  
+1-818-701-1579  
<cs<http://www.imgpresents.com>

To open a Technical Support case and create a support ticket, please refer to <https://www.imgpresents.com/orders/support/techsupport.htm>.

Please provide, or have the following information ready when you ask for assistance:

- My-T-Soft Basic version number, update level.
- Registered serial number (or if running demo)
- Make and Model of your computer.
- Windows version number, any Service Packs or major updates.
- A description of the problem.
- If possible, a list of the steps required to recreate the problem.
- If you have seen an error code, record and report the number.
- Additional information may be required, such as monitor type, type of pointing device, amount of RAM in your system, other software running (anti-virus, spyware, virtual machine, etc.).

## Product Catalog

**Innovation Management Group, Inc.'s Products**

### **Commercial Division Products...**

Indestructible Keyboards & Indispensable Utilities!

**My-T-Soft® Build-A-Board**

The Ultimate Tool for creating and modifying On-Screen Keyboards, buttons, and Panels. My-T-Soft Family, plus Cross-Platform Support

**My-T-Pen® for Windows**

On-Screen Keyboards & Utilities for Pen Based Systems

**My-T-Touch® for Windows**

On-Screen Keyboards & Utilities for Touchscreens

**My-T-Soft® Basic for Windows**

Basic On-Screen Keyboards and access to online database of boards. Free Edition, or IMG Personal License.

**My-T-Soft® Professional for Windows**

On-Screen Keyboards & Utilities for any pointing device Built-in Layouts, Logon Utilities, Developer Tools, and Support.

**My-T-Soft® TS for Terminal Services**

On-Screen Keyboards for Terminal Server / Terminal Services

**My-T-Soft® for Android**

Custom layouts and special features for Android based devices

**TouchRight Utilities**

Right Click Access for Pens & Touchscreens

**Assistive Technology Division Products...**

Enabling Tools for Special Needs

**AT Accessibility Suite**

IMG's Assistive Technology Software with site license options

**Joystick-To-Mouse**

The Software That Lets You Run Windows With A Joystick!

**My-T-Mouse®**

The Software That Makes Your Mouse a Mouse That Types! Indispensable & Utilities for any Mouse or Trackball

**OnScreen**

Special Features for disabled & impaired users Word Prediction / Word Completion / Window Control / Scanning

**OnScreen with CrossScanner**

Complete control of Windows from a single switch! Support for Keyboard, Mouse, Joystick interfaces

**SmartClick**

Operate Windows without the need to Press/Click a Button

**The Magnifier**

Area and Full Screen Magnifier, Cursor Locator, Visual Aids

**WordComplete**

Word Completion, adaptive word prediction, Word List Management, etc. Type Better, Type Less - we do the rest!

**For further information...**

**Contact your Local Software Dealer, your Hardware Vendor, your Information Technology Department**

or

Innovation Management Group, Inc.  
179 Niblick Road #454  
Paso Robles, CA 93446  
USA  
1-800-889-0987 (US & Canada)  
+1-818-701-1579  
<cs<http://www.imgpresents.com>  
<http://www.my-t-mouse.com>  
<http://www.my-t-pen.com>  
<http://www.my-t-soft.com>  
<http://www.my-t-touch.com>  
<http://www.onscreen-keyboard.com>  
<http://www.build-a-board.com>  
<http://www.joystick-to-mouse.com>  
<http://www.themagnifier.us>

For International Contacts, please see Web Site...

My-T-Mouse<sup>®</sup>, My-T-Pen<sup>®</sup>, My-T-Touch<sup>®</sup> and My-T-Soft<sup>®</sup> are registered trademarks of Innovation Management Group, Inc.

# Part II. Using My-T-Soft Basic

## Description of how to operate and configure My-T-Soft Basic.

**Description of how to operate and configure My-T-Soft Basic.**

**Chapter 3 - My-T-Soft Basic Operation** contains general operation information, along with specific information about each of My-T-Soft Basic's capabilities.

**Chapter 4 - Advanced User Notes** additional information, configuration options, and advanced notes on My-T-Soft Basic.

# Chapter 3. My-T-Soft Basic Operation

## General Operation

All features and actions within My-T-Soft Basic are performed by moving the cursor / pointer over the desired button and single clicking the primary button. My-T-Soft Basic may be repositioned on the screen by clicking anywhere on the background (anywhere that is not a button) of My-T-Soft Basic and dragging it to the new screen position.

The secondary button can be used to click and drag the board (if this option is enabled within the KeyBoard File (KBF)). A single-click by the secondary button will open the run-time menu (if this option is enabled within the KBF).

Buttons can be configured to type, perform macros, perform internal commands, run external programs, open other boards, display clocks, ads, or other external displays as configured by IMG's Build-A-Board. See Build-A-Board.com (<http://www.build-a-board.com>) for more details.

## Free Edition (FREEBOARD.KBF)

### My-T-Soft Basic Free Edition



When run without a license, My-T-Soft Basic will open with the default board being FREEBOARD.KBF (instead of the regular default KEYBOARD.KBF). This provides a selection of useful boards and options that show off some of the capabilities of My-T-Soft Basic. Boards opened while unlicensed will run for several minutes, and when the limited run-time period expires, the layout will revert back to the FreeBoard layout.

**Free Edition Limitations:** If running on an unlicensed system with an unlicensed board, the board will stay open for a limited time. After closing the default FreeBoard layout will be shown. Included Free Boards that open from the default FreeBoard layout all have an advertisement area that displays advertisements. To remove these limitations, purchase a license for your system (or IMG's Build-A-Board). License options range from the IMG Personal License for individuals to Global Enterprise licenses.

**Note:** If a Board is built from a licensed version of Build-A-Board, My-T-Soft Basic will run fully licensed. My-T-Soft Basic is a special package/release of the the Windows run-time target for IMG's Build-A-Board System.

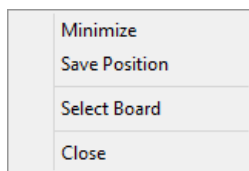
The FreeBoard has a few special keys. If you click on the white X/Red key, My-T-Soft Basic will close. The minimize/Cyan key will switch to a single button/small keyboard minimized state - click on button to open to the full board. The white ?/Blue key will open this help file to this section. The white +/Green key will open the built-in Board Select window.

The FreeBoard has a few special areas. Click on any ad to go to the website/web page in your browser. Click on the Build-A-Board note at the bottom to open Build-A-Board.com in your browser.

Right-click to open the My-T-Soft Basic run-time menu.

## Using My-T-Soft Basic Menu

### Using the Menu



When available, the run-time menu offers the following selections:

#### **Minimize**

This will close the current board and place a small icon in the tray on the system Task Bar. When the icon is opened, the current board will be displayed again.

#### **Save Position**

This will save the current position in the KeyBoard File. (Any KeyBoard File (KBF) will open at its saved position unless opened with an override via a Load KBF internal command)



### Select Layout

This opens the Select Layout window to open other available layouts..

### Close

This will close and shut-down My-T-Soft Basic.

The built-in menu is limited to provide a bare-minimum of expected functions that may be required for boards that do not include buttons that perform these tasks, and to address user expectations when using the secondary button (i.e. right-click).

**Note:** The menu (when enabled) is typically accessed via a right-click (secondary button). Optionally the menu may be opened with a left press-and-hold, or when a board is moved partially off-screen. See MYTSOFT.INI settings for further details.

**Note:** This menu can be disabled by the Allow User to Access Popup Menu from within Build-A-Board, or with the MenuOverride setting within the embedded MYTSOFT.INI in the KBF.

## Select Board

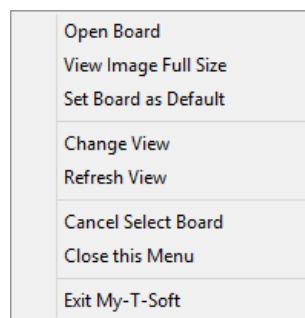
### Select Board



The Select Board window (if available via the Popup Menu or via button with the CMD:BOARDS internal command) shows a view of all available Boards in the [Public Documents]\Build-A-Board\BOARDS folder. To select a board, just click on the board when highlighted - the Select Board window will close and the selected board will open. If available, a right-click will open an option menu (see below). You may scroll to the top, move up a row, or move up a page by using buttons at the top, or scroll to the bottom, move down a row, or move down a page by using buttons at the bottom. You may close My-T-Soft Basic using the X at the upper right.

The upper left selection shows "Get My Boards" and when selected will open the IMG Data Manager to download your favorite boards from your Build-A-Board.com account (Internet access required). Note that the system must have a valid license and you must have an active Build-A-Board.com account to utilize this option. This allows you to quickly access your favorite boards on a new system, or refresh/update your boards if new favorites have been selected.

### Select Board Option Menu



Each board can utilize the menu options:

#### **Open Board**

This will open the highlighted board for use in My-T-Soft Basic.

#### **View Image Full Size**

This will open a separate window and display the board as it will appear if opened.

#### **Set Board as Default**

This sets/copies the board to KEYBOARD.KBF, the default board (for licensed versions) which will open when My-T-Soft Basic is launched.

#### **Change View**

This will scroll through various sizes to display the boards in a larger or smaller selection grid.

#### **Refresh View**

This will re-read all the Boards and update the view/selection.

#### **Cancel Select Board**

This will close the Select Boards window and revert to the current (previously in use) Board.

#### **Close this Menu**

This will close the Select Boards Menu and return to the Select Boards window.

#### **Exit My-T-Soft**

This will close and shut down the Select Boards window and end My-T-Soft Basic.

# Chapter 4. Advanced User Notes

## Advanced User Notes & Information

The Advanced User Notes and Technical Documentation covers a wide-range of topics & information. Detailing all of the features, options, settings mixed in with the standard product help would overwhelm the majority of users, so the more technical and advanced portions are included here.

**Note:** For up-to-date information, and other specific technical issues, it will always be important to refer to the on-line support database at <http://www.imgpresents.com/imgfaq.htm>

If you have been referred to this section, or have been unable to resolve your question(s) or problems within this manual, on-line help, and tutorial, or are an advanced user familiar with Windows Initialization files (INI type files), the Registry, and wish to learn all of My-T-Soft Basic configuration Options, please read the following chapter. For developers, integrators, or technicians, the following information should be read in its entirety - also refer to the IMG Developer's Kit for even more options & other advanced information.

## My-T-Soft Basic Files & File Notes & Installation Information

My-T-Soft Basic Files & File Notes

Files located in the \Program Files\My-T-Soft Basic Installation Directory:

The following files are REQUIRED for proper operation of

My-T-Soft Basic:

- MYTSOFT.EXE - My-T-Soft Basic executable
- MYTSOFT.asInvoker.EXE - The My-T-Soft Basic executable (asInvoker)
- MYTSOFT.highestAvailable.EXE - The My-T-Soft Basic executable (highestAvailable)
- MYTSOFT.requireAdministrator.EXE - The My-T-Soft Basic executable (requireAdministrator)
- MYTSOFT.noManifest.EXE - The My-T-Soft Basic executable (noManifest)
- MACROBAT.EXE - Macro Batch server, virtual input support executable
- GDIKIT.DLL - Dynamic Link Library for Windows graphics
- IMGVERS.DLL - IMG Dynamic Link Library
- HELP\\*.html, HELP\IMAGES\\*.png - My-T-Soft Basic Help
- LICENSE.EXE - IMG License Manager
- README.TXT - Product Installation text file
- MANIFEST.TXT - Reference File from Build

- IMGUTIL.EXE - used for installation and uninstallation of software
- ADDISPLAY.DLL - Dynamic Link Library for advertisement display
- CLOCKDISPLAY.DLL - Dynamic Link Library for Time, Clock/Date display
- FREEBOARD.DLL - Dynamic Link Library for FreeBoard animation
- UNZIP32S.DLL - Dynamic Link Library for installation and updates

Other Files:

- CTALTDEL.EXE - Windows Interface Utility for MTS\_SELECT.KBF (Note 1)
- CLOSEMTS.EXE - Developer's Kit Utility to close My-T-Soft (Note 2)
- KBFEDIT.EXE - Utility to edit KeyBoard Files (KBFs) (Note 3)
- MTSDOCK.EXE - Utility to dock My-T-Soft (Note 4)
- MTSSTART.EXE - Utility that runs when My-T-Soft Starts (Note 5)
- MTSEND.EXE - Utility that runs when My-T-Soft Ends (Note 5)
- EDITSYNC.EXE - Utility to sync to input text caret (Note 6)
- ESLIB.DLL - Dynamic Link Library for EditSync
- TYPEFILE.EXE - Utility to initiate macros externally (Note 7)

Other Folders:

- ADS - This is an advertisement folder holding Bitmap images, a configuration file (ADS.TXT), and a ad authorization file (ADSAUTH.TXT)
- MANAGER\ESTABLISH.EXE - this is a post installation utility that establishes or updates the IMG Download Manager and IMG License Manager files as outlined below.

**Located in \Program Files\Common Files\Innovation Management Group\Download Manager directory:**

- IMGCLEAN.EXE - used to complete uninstall of software, required for Control Panel Add/Remove Programs
- IMGDLM.EXE - The IMG Download Manager - Installed by MANAGER\ESTABLISH.EXE
- IMGDLMLS.EXE - The IMG Data Manager - Installed by MANAGER\ESTABLISH.EXE
- IMGNET.DLL - The IMG Download Manager Library - Installed by MANAGER\ESTABLISH.EXE

**Located in \Program Files\Common Files\Innovation Management Group\License Manager directory:**

- LICENSE.DLL - library used by the IMG License Manager and IMG Download Manager
- LICENSE.LIC - System License file (downloaded/not part of install)

**Note 1:** CTALTDEL.EXE is the Ctrl-Alt-Delete utility from My-T-Soft Professional that allows a user to log off Windows, shutdown Windows, restart, or view the Task manager. It is tied into the MTS\_SELECT.KBF to offer the functionality and to show off running an external executable from a button.

**Note 2:** CLOSEMTS.EXE is from the IMG Developer's Kit (<http://www.imgpresents.com/imgdev.htm>) and when run, will Close My-T-Soft - there are numerous other utilities, include Move, Minimize/Open, etc. for use when integrating My-T-Soft.

**Note 3:** KBFEDIT.EXE is a utility that can quickly edit the MYTSOFT.INI embedded in a KBF (KeyBoard File). Other options include changing the startup X/Y position of the Board, selecting current Keyboard Macro File (i.e. which language is in use), and showing embedded files in the KBF.

**Note 4:** MTSDOCK.EXE is a custom Utility to dock My-T-Soft using the AppBar interface. Refer to the IMG Developer's Kit (<http://www.imgpresents.com/imgdev.htm>) for more details. This specific build was customized for a customer, and may be useful as is, but also expects fixed size boards to match screen resolution.

**Note 5:** MTSSTART.EXE, MTSSEND.EXE are startup/shutdown utilities that are launched when My-T-Soft starts. As placeholders, these just play wave files. They can safely be deleted if the sounds are not desired. Note that these can be replaced with other executables to perform different tasks as relevant to startup/shutdown (file names must match these placeholders).

**Note 6:** EDITSYNC.EXE is a utility to sync to input text caret, ESLIB.DLL is the Dynamic Link Library for EditSync. Due to system interaction, it is recommended only for specific usage scenarios.

**Note 7:** TYPEFILE.EXE is an external utility to initiate macros or execute a macro contained in a file. My-T-Soft Basic must be running for this to operate, and it is intended to be run as a Key Action e.g. [CMD:EXEC=TYPEFILE.EXE SOMEFILE.KMF]. Note SOMEFILE.KMF must be a UNICODE encoded file.

**Special use executables:** Included in the installation folder are five executables for My-T-Soft Basic - MYTSOFT.exe, MYTSOFT.asInvoker.exe, MYTSOFT.highestAvailable.exe, MYTSOFT.noManifest.exe, and MYTSOFT.requireAdministrator.exe. Depending on the configuration of User Account Control (UAC) and the specific needs of an individual user, there can be situations where one of the optional executables may be more appropriate. If necessary, rename MYTSOFT.exe to MYTSOFT.original.exe, then rename the desired optional executable to MYTSOFT.exe. These contain requested execution levels in the manifest for handling by the system. Due to User Interface Privilege Isolation (UIPI) concerns, these will allow operation for different applications and special usage situations. For example, if a application is elevated to Administrator, My-T-Soft Basic may not operate as desired if running as the default "asInvoker" execution level. By using the "highestAvailable" or "requireAdministrator" executables, My-T-Soft Basic will be elevated when the process is started.

## Registry Entries and Notes

Registry entries are performed during install (from INSTALL.XML script). The GlobalBoardsFolder is a critical value to ensure access to the correct location for Boards. There are also file associations to the .KBF files set that tie the KBF files back to My-T-Soft Basic. The registry entries are listed below for reference if My-T-Soft Basic is to be installed from a different source or part of a image, or copied without using the installation process.

Note: These are all REG\_SZ type values

[HKEY\_LOCAL\_MACHINE\SOFTWARE\Innovation Management Group\Build-A-Board]

GlobalBoardsFolder=%COMMON DOCUMENTS%\Build-A-Board\BOARDS

e.g. GlobalBoardsFolder=\Users\Public\Documents\Build-A-Board\BOARDS

[HKEY\_LOCAL\_MACHINE\SOFTWARE\Innovation Management Group\Products\My-T-Soft Basic]

AttemptLicense=0

[HKEY\_LOCAL\_MACHINE\SOFTWARE\Innovation Management Group\Products\My-T-Soft Basic]

Installed=1

[HKEY\_LOCAL\_MACHINE\SOFTWARE\Innovation Management Group\Products\My-T-Soft Basic]

Location=%PROGRAMFILES%\My-T-Soft Basic

e.g. Location=\Program Files\My-T-Soft Basic or Location=\Program Files (x86)\My-T-Soft Basic

[HKEY\_LOCAL\_MACHINE\SOFTWARE\Innovation Management Group\Products\My-T-Soft Basic]

UpdateLevel=2

[HKEY\_CLASSES\_ROOT\.kbf]

@=My-T-Soft.KeyBoardFile

e.g. Default value is My-T-Soft.KeyBoardFile

[HKEY\_CLASSES\_ROOT\My-T-Soft.KeyBoardFile]

@=My-T-Soft KeyBoardFile

e.g. Default value is My-T-Soft KeyBoardFile

[HKEY\_CLASSES\_ROOT\My-T-Soft.KeyBoardFile\DefaultIcon]

@=%PROGRAMFILES%\My-T-Soft Basic\MYTSOFT.exe,2

e.g. Default value is \Program Files\My-T-Soft Basic\MYTSOFT.EXE,2

[HKEY\_CLASSES\_ROOT\My-T-Soft.KeyBoardFile\shell\open\command]

@=%PROGRAMFILES%\My-T-Soft Basic\MYTSOFT.exe %1

e.g. Default value is \Program Files\My-T-Soft Basic\MYTSOFT.EXE %1

## Updates

My-T-Soft Basic is the first release by Innovation Management Group, Inc. that utilizes a Manifest, Date, and Web based file image set. This structure is checked when the Check for Updates utility is launched

(IMGDLM.EXE in the Download Manager folder in Common Files). When updates are performed, the file image will be updated and the MANIFEST.TXT date will be changed. When Check for Updates is performed, the MANIFEST.TXT file is retrieved from the file image on the download server, and if necessary it will be updated. Then a check against the manifest will update files requiring updates. If less than 7 files are required, the individual files will be downloaded. If more than 7 files are required, the entire install package will be downloaded and all files will be updated.

**Note:** Software release files on the download server are at <ftp://downloads.my-t-soft.com/software>

**Note:** For up-to-date information, and other specific technical issues, it will always be important to refer to the on-line support database at <http://www.imgpresents.com/imgfaq.htm>

## Get My Boards

This option uses the IMG Data Manager (IMGDLMLS.EXE) in the Download Manager folder in Common Files. The LS version refers to the Low Security (asInvoker) that works with the [Public Documents]\Build-A-Board\BOARDS folder and the user's Web Account at Build-A-Board.com. A properly licensed system (LICENSE.LIC file in the License Manager folder in Common Files) is required so the account information is present. Additionally, boards must be tagged correctly in the Build-A-Board.com to be retrieved via this option.

**Note:** This can be built into a board with the Key Action being [CMD:GETMYBOARDS] or the older [CMD:GETMYKBF], along with the shortcuts [CMD:GB] or [CMD:GK].

## My-T-Soft Basic Initialization File Documentation (MYTSOFT.INI)

Listed below are settings and information for the Configuration & options for My-T-Soft Basic.

**Location of MYTSOFT.INI:** MYTSOFT.INI is embedded within the KBF (KeyBoard File) and may be edited in IMG's Build-A-Board or via the utility KBFEDIT.exe (KeyBoard File Editor). Each KBF has its own MYTSOFT.INI, so certain operational settings are tied to the current board in use. Please contact IMG for global operational options & licensing.

All Settings are the default Settings of My-T-Soft Basic.

### [Configuration]

Info=This is MYTSOFT.TXT from Builder as Unicode.

;if PanelImage references a valid image (of form IMGnnnnn.PNG, e.g. IMG00002.PNG)

;then this image will be used at run-time as the panel background

PanelImage=

;The following 2 entries are created at build time, and are normally seen

;in the built KBF via KBFEdit (but not from the Builder)

;These entries should not be modified or removed

;ProjectName=

;GUID=

#### **KeyboardMacroFile=**

;This indicates which (if any) KMF (Keyboard Macro File) is in use to handle

;key labels and key actions.

;Note that the KBF must use the KMF abstraction entry for both Label and Action

;for this to be of use. See Build-A-Board for more details.

#### **[Settings]**

;Various global or user optional settings can go here.

;This file is embedded in the KBF, and is accessed at run-time.

;This provides another way for settings (especially user options) to travel with a KBF file.

#### **XParallax=0**

#### **YParallax=0**

;The XParallax / Y Parallax settings can be a positive or negative integer value that

;directly modify the X/Y left click/mouse button position to adjust for an external

;or system offset induced by glass thickness / positioning / etc.

;The implementation is to adjust the actual coordinate by adding the integer indicated

;here - use XParallax=0 and yParallax=0 to bypass these settings

#### **KeyBlockTime=0**

;The KeyBlockTime is a per key blockout time in milliseconds where any additional

;key press via mouse click event is ignored (blocked) The setting is per key

;but is global in nature - there is one setting for any particular key, and that key

;cannot be "clicked" during the blockout time. However, another new key press will clear

;the current blockout and start a new blockout time for the new key.

;Use KeyBlockTime=0 to bypass this setting

;KeyBlockTime=100 means 100ms key block time out

;KeyBlockTime=500 means 500ms (1/2 second) key block time out

#### **CursorOverride=Hand**

;The CursorOverride allows selection of something other than the default hand type cursor



;None = blank, no cursor  
;Blank = blank, no cursor  
;Dot = small dot cursor  
;SmallHand = small hand cursor  
;Hand = regular hand cursor  
;no entry, anything else - regular hand cursor

**MenuOverride=**

;The MenuOverride setting will bypass the built in "Access Popup Menu" setting in the KBF  
;If MenuOverride=No or just blank, MenuOverride= then the KBF setting will use  
;If MenuOverride=Menu the menu will be available  
;If MenuOverride=NoMenu, then the menu will not be available

**MenuOffScreen=**

;The MenuOffScreen setting will enable the popup menu (if available) when a portion of  
;the window is moved off-screen. This allows a limited pointing device to access  
;the menu  
;If MenuOffScreen=No or just blank, MenuOffScreen= then no menu will be shown  
;If MenuOffScreen=Yes then the menu will be shown if a portion of the keyboard is off-screen

**MenuLeftHold=**

;The MenuLeftHold setting will enable the popup menu (if available) when the main  
;button is held for several seconds. This allows a limited pointing device to access  
;the menu  
;If MenuLeftHold=No or just blank, MenuLeftHold= then no menu will be shown  
;If MenuLeftHold=Yes then the menu will be shown if main button is held down  
;The menu will be shown when the mouse button is released. The menu will not be  
;shown if the release position is more than 5 pixels away from the pressed position,  
;so any movement will typically prevent the menu from being shown.

**MoveOverride=**

;The MoveOverride setting will bypass the built in "Allow User to Move My-T-Soft (click & drag)"  
;setting in the KBF  
;If MoveOverride=No or just blank, MenuOverride= then the KBF setting will use  
;If MoveOverride=Move the user will be able to move the layout (click & drag to move)  
;If MoveOverride=NoMove, then the layout will not be moveable

**HoverEnable=**

;The HoverEnable setting will enable the use of the key hover highlight option  
;If HoverEnable=No or just blank, the key hover option will be disabled

;If HoverEnable=Yes or HoverEnable=Hover the key hover will be enabled

;If HoverEnable=NoHover, then the key hover option will be disabled

**KeyPressEnable=**

;The KeyPressEnable setting will enable the use of the key press highlight option

;If KeyPressEnable=No or just blank, the key press option will be disabled

;If KeyPressEnable=Yes or KeyPressEnable=KeyPress the key press option will be enabled

;If KeyPressEnable=NoKeyPress, then the key press option will be disabled

**KeyZoom=No**

**KeyZoomOffset=15**

**KeyZoomRegionAdjust=8**

**KeyZoomHideZoomTimeMS=250**

**KeyZoomMagFactor=2**

**KeyZoomLocation=1**

**KeyZoomImage=Down**

**KeyZoomWideKeyRatioNoZoom=1.5**

;The KeyZoom setting will use a secondary window to display a magnified (zoomed) image of

;the key being pressed. If KeyZoom=Yes, the window will be used, and the other settings

;will be referenced. If KeyZoom=No (or blank/anything but yes), the window will not be

;used, and the other settings will not be referenced.

;KeyZoomOffset=15 - this is a pixel offset used for handling the display of the window

;off the cursor - larger values means further away from the current cursor position.

;KeyZoomRegionAdjust=8 - this is a value used for the rounded rectangle region used for

;the key zoom window. If the value is negative, no region is used, and a rectangle will

;be shown. Larger values mean less area for the key, and more rounded corners.

;KeyZoomHideZoomTimeMS=450 is the setting for the timer used to automatically hide the

;zoomed image window - reasonable values range from 500-1500. Note that if the mouse cursor

;clicks or moves over the zoom window, it will instantly hide.

;KeyZoomMagFactor=2 - this is how much of a magnification factor will be used. It is an integer.

;Reasonable values are 2 or 3.

;KeyZoomLocation=1 - this setting determines which location the zoom window will be shown

;in reference to the mouse cursor / click point. Use 1 for above, 2, for below, 3 for left, 4 for right

;KeyZoomImage=Default - this setting determines which image(s) will be used for the zoom/magnified key image

;If empty, or KeyZoomImage=Active, then the current/active painted image will be used. If

;KeyZoomImage=Default, then only the base/original/Up image will be used for the zoom image

;If KeyZoomImage=Down, then the down key image will be used for the zoom image  
;KeyZoomWideKeyRatioNoZoom=0 - If KeyZoomWideKeyRatioNoZoom is 0, then ALL keys will be  
;treated as equal, and the zoom window will be displayed for all keys.  
;If KeyZoomWideKeyRatioNoZoom is non zero, then the ratio will determine which wide keys will  
NOT be ;displayed.  
;For example, if KeyZoomWideKeyRatioNoZoom=2, then only keys twice as wide as they are high  
;will NOT be zoomed. KeyZoomWideKeyRatioNoZoom=1.5 is the lowest value you should use, as  
lower  
;values could result in no keys being displayed, even though KeyZoom=Yes

### **[Region]**

;This is 1280 settings  
;Area1=Ellipse,0,2,70,70  
;Area2=Rect,0,38,1280,229  
;Area3=Ellipse,1210,2,1280,70  
;Area4=Rect,38,2,1242,264  
;Area5=Ellipse,0,194,70,264  
;Area6=Ellipse,1210,194,1280,264  
;The section [Region] can have Area1 and /or Area2 entries up to Area8  
;The rectangle is 0 based, and has form "Area1=Rect,[Left],[Top],[Right],[Bottom]"  
;e.g. Area1=Rect,10,12,100,200  
;The Ellipse shape is the ellipse that fits in the rectangle defined by  
;a specified "Ellipse" and the rectange coordinates  
;0 based, and has form "Area1=Ellipse,[Left],[Top],[Right],[Bottom]"  
;e.g. Area1=Ellipse,10,12,100,200  
;If only Area1 exists, it will be the sole region  
;If the coordinates or the region fails for any reason, no region action will occur  
;If Area1 and Area2 exists, they will be combined with an OR logic function,  
;resulting in a "Union of the 2 combined regions" This continues up to Area8  
;If the regions are not connected, there will be multiple visible regions  
;If any area is invalid, no region action will occur  
;General approach / suggestions  
;- Establish board size in Build-A-Board  
;- Decide on final shape to be shown on target system  
;- Use graph paper, or visualize within Build-A-Board the coordinates for  
;the final shape

;- Enter Area1 and/or Area2-Area8 as required  
;- Save [Region] section in Keyboard Run-Time Settings  
;- Build board  
;- Test  
;- To disable, remove section, or comment out entries using semi-colon  
;Example - rounded rect keyboard  
;[Region]  
;Area1=Ellipse,0,2,70,70  
;Area2=Rect,0,38,1280,229  
;Area3=Ellipse,1210,2,1280,70  
;Area4=Rect,38,2,1242,264  
;Area5=Ellipse,0,194,70,264  
;Area6=Ellipse,1210,194,1280,264  
;Examples - Board is 200 x 300  
;Circle  
;[Region]  
;Area1=Ellipse,0,0,200,200  
;T shape  
;[Region]  
;Area1=Rect,0,0,200,100  
;Area2=Rect,75,100,125,300  
;Reversed L shape  
;[Region]  
;Area1=Rect,150,0,200,300  
;Area2=Rect,0,200,200,300  
**[Macros]**  
Macro1=Example Macro[Enter]  
Macro2=This is a sample sentence for Macro #2![Enter]  
Macro3=[CMD:EXEC=Notepad.exe]

## Keyboard Operation

### Typing

In general, keystrokes and macros (sequences of keystrokes) work as one would expect, but there are some known issues that are outlined here. For further details, refer to IMG's Build-A-Board, review online technical knowledge base, or contact IMG Technical Support.

Some layouts use the KMF (KeyboardMacroFile) indirection, and can change languages on the fly. As such, a keystroke may work as expected for a German layout typing into a German locale, but that same keystroke may not operate if using a different locale, or layout, or both. So some keys may not operate in all locales for all layouts with these types of layouts. For other issues that may show up due to different locales and layouts, refer to this KnowledgeBase Item: IG2011120674 (<http://www.imgpresents.com/imgfaq.htm?keyword=IG2011120674>)

Extended key scan codes. Most number pads are built with just the numbers as key actions. These will lookup and type number keys from the top row of the keyboard, not the extended scan code that correspond to the numbers on the actual physical keyboard numpad. Actual scan codes can be used with the %%snnn or %%ennn options - see Build-A-Board for further information.

### Command Line Options

**MYTSOFT.EXE -? [/?] [-Help] [/Help]** will open help information and list command line options.

**MYTSOFT.EXE -v [/v] [-version] [/version]** will display version information.

**MYTSOFT.EXE -NoSplash** will open My-T-Soft without opening splash screen

**MYTSOFT.EXE [PATH]FILE.KBF** will open My-T-Soft with specific KBF file (Licensed version only). This can be used with -NoSplash option, e.g. **MYTSOFT.EXE FILE.KBF -NoSplash**

### Opening/Loading Boards

If My-T-Soft Basic is run with no command line, the default KEYBOARD.KBF will be opened. If Unlicensed, FREEBOARD.KBF will override this and FREEBOARD.KBF will be opened. Even if there is no system license, a command line specified KBF will allow licensed operation (as long as the specified KBF is licensed). If KEYBOARD.KBF is a licensed board, you can specify this board but must use the full path.

New Boards will open from their saved screen position (X/Y position embedded in KBF). If a board opens off-screen (due to resolution/saved position), run My-T-Soft again (which will center open layout on main display screen). Some boards are tied to other boards, and can be opened with the Load KBF option ([CMD:LKBF=...]), which can control opening position (overrides saved KBF position). Current screen position can be saved from menu (if available) or externally with TypeFile.exe (e.g. TYPEFILE.EXE [CMD:SAVEPOS])

## Application Notes

### Topmost Windows

Topmost windows will always be above all other windows. The window manager sorts multiple topmost windows based on the order of when the topmost window attribute setting was set. If there are multiple topmost windows in the system, the window manager needs some way to order these windows (there can be only one topmost window in the list, and if there are multiple windows with the topmost attribute, some sort of ordering is required). When multiple windows are topmost, it is possible My-T-Soft Basic will not be visible. One option is to clear the Always Topmost setting, then reset it. If you are in control of the application that is topmost, you have the option of using the SetWindowPos API call to control the

order of the topmost windows. You may run My-T-Soft Basic after all other applications and topmost windows have been created and shown, to ensure it is the last window set with the topmost window attribute.

**Note:** Applications and other programs may also force the topmost setting for their windows - My-T-Soft Basic only sets this attribute when its window is created, so if My-T-Soft Basic is NOT the topmost window, then it is likely other windows have this attribute, or are forcing this attribute, causing the My-T-Soft Basic window to be lower in the Z order for topmost windows. There is a build option to ForceTopmost, but it is not in use (or available) because it is not a good practice to force this issue. In general, the options above are the best approach if there is a window ordering problem. If additional assistance regarding this topic is required for your particular application, please contact IMG customer service.

### **Device Compatibility**

Over the years the product has been available, every once in a while, a question about an otherwise unheard of touchscreen device will be raised. From what we can gather, there are some low volume touchscreen interfaces that do not use the standard pointing device interface via a Windows compatible driver. Specifically, My-T-Soft Basic will work fine with a physical mouse connected to the system, but the touchscreen itself does not operate My-T-Soft Basic properly. So any device that does not use a driver, and perhaps uses higher-level functions (APIs such as SendInput, mouse\_event, etc.) may cause issues. In general, a standard physical device should be used to verify My-T-Soft Basic operation. This is why IMG always recommends interested parties download and test with any IMG software to ensure that the results are satisfactory, especially if non-standard hardware is being used.

### **Multitouch**

My-T-Soft Professional has support for multi-touch devices, but this is currently not included in My-T-Soft Basic. For options and further information, please contact IMG customer service.

### **64-Bit Systems**

There are no inherent advantages for user-interface software such as My-T-Soft Basic to operate as a native 64-bit build, so to help with support having a single 32-bit release allows operation in both 32-bit and 64-bit systems. The 64-bit operating system handles the process/user interface aspects without any limitations and because this is a user interface with the user being the limiting factor, there is no need for faster operation or larger memory access that the 64-bit build would enable.

## **Final Release Notes**

Version 2.00 (April 9, 2001) - Original Release (with Build-A-Board 2.00)

Version 2.10 (March 21, 2002) - Build-A-Board 2.10 release

Version 2.20 Release 3 (August 9, 2010) - Build-A-Board 2.20 release

Version 2.30 Release 2 - My-T-Soft Basic Product (October 24, 2014)

Version 2.30 Release 3 - Version display, IMG Data Manager 1.39, License update (November 7, 2014)

Version 2.30 Release 4 - Windows Store updates (November 12, 2014)

Version 2.30 Release 5-11 - My-T-Soft Professional, Build-A-Board, and Customer releases

Version 2.30 Release 12 - 7/1/2022

# Customer Suggestions

We appreciate and welcome suggestions from our users for features that you would like to see in future versions of My-T-Soft Basic. Please feel free to send us any comments you may have that would make our product more useful to you. All suggestions and ideas become the property of Innovation Management Group, Inc.

Send to:

Innovation Management Group, Inc.  
Customer Service  
179 Niblick Road #454  
Paso Robles, CA 93446  
USA

Or contact us directly:

1-800-889-0987 (US & Canada)  
+1-818-701-1579  
<cs<http://www.imgpresents.com>

Date: \_\_\_\_\_

Name: \_\_\_\_\_

Address: \_\_\_\_\_

City: \_\_\_\_\_

State: \_\_\_\_\_ Zip: \_\_\_\_\_

My-T-Soft Basic Comments and Suggestions:

\_\_\_\_\_  
\_\_\_\_\_  
\_\_\_\_\_  
\_\_\_\_\_

Version 2.30 Release 12

7/1/2022

Copyright © 1999-2022 by Innovation Management Group, Inc.

All Rights Reserved.

My-T-Mouse®, My-T-Pen®, My-T-Touch® and My-T-Soft® are registered trademarks of Innovation Management Group, Inc.

# Index

## Symbols

64-Bit Systems, 33

## A

Account Credentials, 9  
ACCOUNT.TXT, 9  
Add/Remove Programs, 2, 7  
Advanced User Notes, 23  
Application Notes, 33  
AUTOLICENSE, 10

## B

Board, selecting, 21  
Build-A-Board.com Account Credentials, 9

## C

Catalog, 15  
CD (CD-ROM or DVD), 1, 6  
Certificate of Authenticity, 1, 6  
Commonly Asked Questions, 14  
Compatibility, 14, 33  
Configuration section [Configuration] (INI file), 27  
Copyrights, 3  
Credentials, 9  
CursorOverride (INI file), 28  
Customer Service, 15  
Customer Suggestions, 35  
Customer Support, 15

## D

Device Compatibility, 33  
DVD (CD-ROM or DVD), 1, 6

## E

equipment, 6  
Evaluation License, 11

## F

Features, 5  
File Notes, 23  
Files - Product Files Installed, 23  
Final Release Notes, 34  
Free Edition, 19  
FREEBOARD.KBF, 19

## G

Get My Boards, 27  
Guide (Using), 3

## H

hard disk space, 6  
hardware requirements, 6  
HoverEnable (INI file), 29

## I

IMG, 7, 8  
IMG License Manager, 8  
IMG Personal License, 8  
Important User Information, 3  
INI - File Documentation (MYTSOFT.INI), 27  
Initialization File Documentation (MYTSOFT.INI), 27  
Innovation Management Group, Inc., 15  
Install  
    Installing, 1, 7  
    Installing / Un-Installing, 6  
IPL (IMG Personal License), 8



**K**

KeyBlockTime (INI file), 28  
 Keyboard Operation, 32  
 KeyboardMacroFile (INI file), 28  
 KeyPressEnable (INI file), 30  
 KeyZoom (INI file), 30

**L**

License Key, 1, 6, 8  
 License Manager, 8  
 Licensing, 8  
 Licensing Information, 7

**M**

Macros section [Macros] (INI file), 32  
 MenuLeftHold (INI file), 29  
 MenuOffScreen (INI file), 29  
 MenuOverride (INI file), 29  
 MoveOverride (INI file), 29  
 Multitouch, 33  
 MYTSOFT.INI File Documentation, 27

**O**

Operation  
   General, 19

**P**

Personal License, 8  
 Product Catalog, 15

**Q**

Questions  
   Commonly Asked Questions, 14  
 Quick Start, 1

**R**

Region section [Region] (INI file), 31  
 Registry Entries (Installation), 26  
 Release Information, 1, 7  
 Release Notes, 34  
 requirements, 6

**S**

Select Board, 21  
 Serial Number, 1, 6, 8  
 Settings section [Settings] (INI file), 28  
 Setup, 1  
 Short-Cut, 5  
 Suggestions, 35  
 Support  
   Customer Support, 15  
   website, 15  
 System requirements, 6

**T**

Technical Documentation Section, 23  
 Topmost window order, 33  
 Trademarks, 3

**U**

Un-Install, 7  
 Updates (Check for Updates), 26  
 Using the Menu, 20  
 Using this guide, 3

**V**

Version, 34

## **W**

- website, 15
- What is My-T-Soft Basic, 4
- What You Need, 6
- Why Do I Need My-T-Soft Basic?, 5
- Windows Applications, 14

## **X**

- XParallax (INI file), 28

## **Y**

- YParallax (INI file), 28